



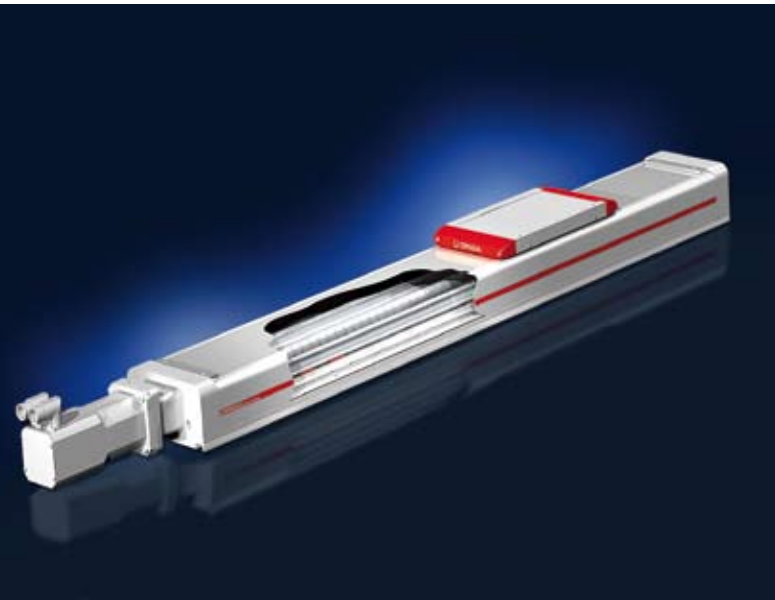
ORIGA Innovations 2008

ORIGA – simply the first

aerospace
climate control
electromechanical
filtration
fluid & gas handling
hydraulics
pneumatics
process control
sealing & shielding



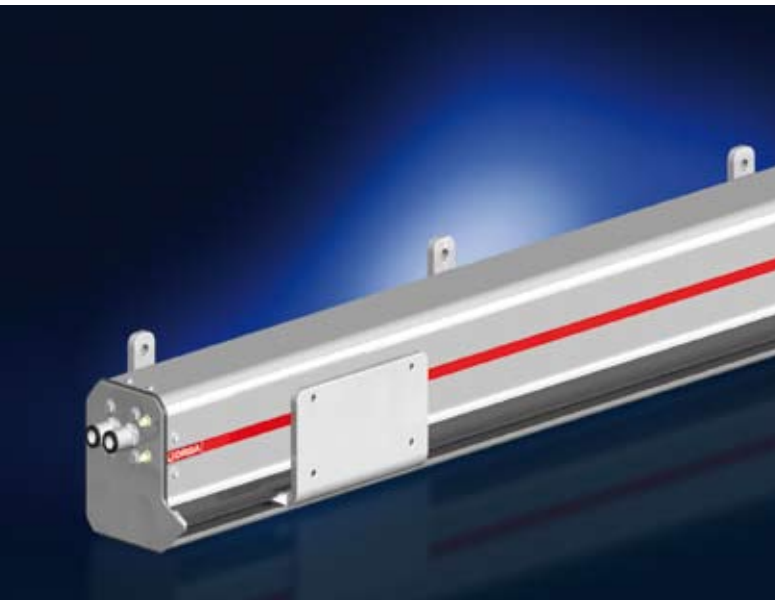
ENGINEERING YOUR SUCCESS.



ODS ORIGA DRIVE SYSTEM

Modular electrical linear drives

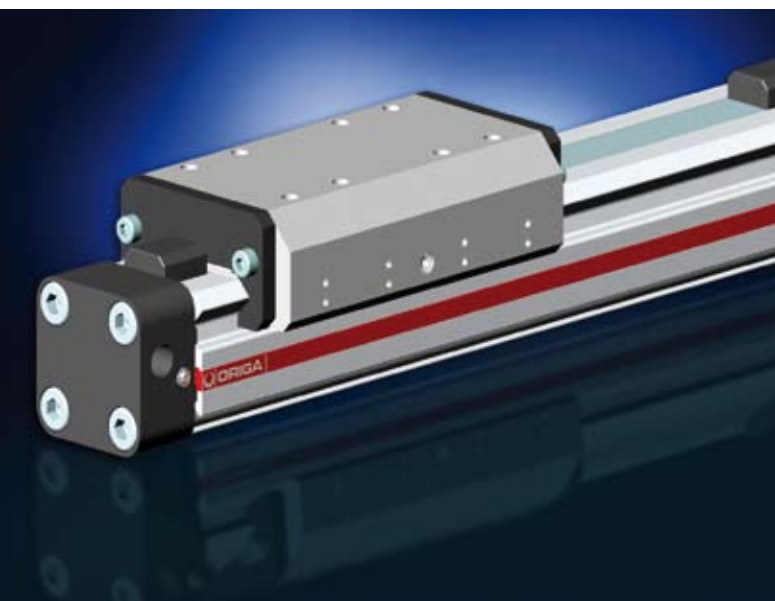
- Drive elements: spindle, toothed belt or linear motor
- Sizes: 145, 180 and 225 mm
- Absorption of large loads and forces
- Flexible attachment points via T-slot or drilling template
- Limit and reference switches can be fitted internally or externally
- Built-in stopping brake
- Integrated displacement measuring system
- Protection class IP20 or IP54 with service-friendly cover
- End cushioning system
- Convenient centralized lubrication



Clean Design

Protection class IP64 protected linear drives

- Complete stainless steel housing with special sealing
- Spray-resistant for cleaning-intensive environments
- User-friendly seal replacement without the need for tools
- Can be fitted in three different installation positions
- Air connection only required from one side
- Flexible, stroke-length-specific attachment points



Basic Guide (Plain Bearing Guide)

for rodless pneumatic linear drives

- Compact: integrated into the cylinder profile tube
- Robust, plastic plain bearing guide for long service life under high load values
- Integrated wiper system and lubricating nipples in the guide carriage
- Easy play adjustment
- Available in diameters 25, 32 and 40 mm, for stroke lengths up to 6000 mm



Airfit A15 Innovative Air Preparation

**Air regulator, filter and nano oil mist lubricator
in high-tech polymers**

- Weight is reduced by high-tech polymers and it can be used in aggressive environments
- Consumption-controlled, self-adjusting nano oil mist lubricator
- Drain valve is manual, semi-automatic or fully automatic
- New container design: only 2 variants for an entire series
- Use at ambient temperatures of up to -40°C
- Available in sizes G1/2, G3/4



Horizontal version

Pneumatic Stop Cylinders

with hydraulic industrial shock absorbers

- Soft, rebound-free stopping of workpieces
- Flexible: for vertical or horizontal installation
- Types with shock absorber/roller lever combination, roller alone or with a piston rod that ensures direct stoppage
- Shock absorbers that are easy to replace, even when installed
- Rotating stop head for adjustment to changes in the direction of travel of the conveyed load
- Rocker, which can be deactivated, for alternate travel function
- Single and dual cylinder variants
- Operating pressure up to 10 bar
- Different shock absorbers for conveyed load weights of up to 1700 kg and speeds of up to 45 m/min
- Optional: position switch for rocker and piston rod



Vertical version



IM 11 Valve Island

Inlet plate for Profibus DP connection

- Simple integration into complex installations using Profibus DP
- Up to 16 valve activations (monostable) within one island configuration
- Version of the 3/2 and 5/2 way valve modules in protection class IP65
- Inlet plate for 3-7 bar, with separate control air for -0.9 bar to 10 bar
- Can be used in ambient temperatures of -10°C to +60°C
- Also for quick and easy conversion of existing multipole islands to Profibus DP
- Optional: connection module for up to eight signal inlets from the position switches of pneumatic actuators

Belastungen

Masse Kraft Masse und Kraft

m [5] kg F_{x0} [0] N F_{x1} [100] N F_{y0} [30] N F_{y1} [30] N F_{z0} [30] N

F_{x2} [0] N F_{y2} [0] N F_{z2} [0] N F_{x3} [0] N F_{y3} [0] N F_{z3} [0] N

F_{x4} [0] N F_{y4} [0] N F_{z4} [0] N F_{x5} [0] N F_{y5} [0] N F_{z5} [0] N

F_{x6} [0] N F_{y6} [0] N F_{z6} [0] N F_{x7} [0] N F_{y7} [0] N F_{z7} [0] N

Berechnung mit eigener Führung

Hublänge: [3000] mm Anzahl Doppelhübe pro Stunde: [90]

Geförderte Verfahrzeit: [2] s Gesamtzahl Betriebsstunden: [5000]

Arbeitsdruck: [6] bar

Optionen

Mit Führung

Mit Stoßdämpfer Abstand Y: [0] mm Abstand Z: [50] mm

Fest eingestellt Einstellbar

Mindestaufschlag für Zylinder oder Führung: [0] %

Assembl

Zylinder	Führung	Führungstyp	Stößlänge A
OSP-P25	S, 25	Geißführung	SA143
OSP-P25	PS 25/25	Rollführung	SA145
OSP-P25	PS 25/26	Rollführung	SA145
OSP-P25	PS 25/44	Rollführung	SA145
OSP-P25	PL25	Rollführung	SA145
OSP-P25	SR25	Kugelführung	SA145

ORIGA RL-Sizing
Auslegungsprogramm für pneumatische Lineartriebe
Bring programme for pneumatic linear drives

RL-Sizing Configuration Software

for pneumatic linear drives

- Quick, convenient and error-free configuration of complete drive packages
- Menu-guided input of application data such as installation position, travel distance and weight
- Configuration data can be saved as a project
- Easier version calculations from saved project data
- Calculation of statistical and dynamic motion conditions
- User-friendly project documentation, creation and printing of order lists
- Available for download or on CD ROM

Parker-Origa GmbH
 Industriestr. 8
 70794 Filderstadt, Deutschland
 Tel. +49 7185 17030
 Fax +49 7158 64870
 www.parker-origa.com

